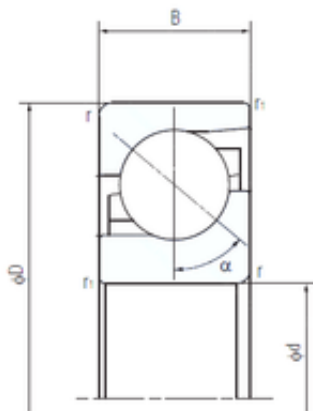




KRS Guide Wheel Bearing Co., Ltd

25 mm x 62 mm x 17 mm NACHI 25TAF06 thrust ball bearings



Bearing No. 25TAF06

Size	25x62x17 mm
Bore Diameter	25 mm
Outer Diameter	62 mm
Width	17 mm
d	25 mm
D	62 mm
B	17 mm
C	17 mm
Angle (°)	50 °
r min.	1,1 mm
r1 min.	0,6 mm
Weight	0,237 Kg
Basic dynamic load rating (C)	56 kN
Basic static load rating (C0)	47,5 kN

25TAF06 Bearing 2D drawings and 3D CAD models