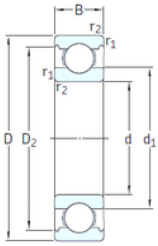




KRS Guide Wheel Bearing Co., Ltd



VA201



ZZ/VA201



ZZ/VA208



ZZ/VA228

25 mm x 52 mm x 15 mm SKF 6205/VA201 deep groove ball bearings

Bearing No. 6205/VA201

6205/VA201 Bearing 2D drawings and 3D CAD models

Size	25x52x15 mm
Bore Diameter	25 mm
Outer Diameter	52 mm
Width	15 mm
d	25 mm
D	52 mm
B	15 mm
C	15 mm
d1	34,3 mm
r1 min.	1 mm
r2 min.	1 mm
D2	46,3 mm
Weight	0,13 Kg
Temperature -	30 to +250 °
Basic static load rating (C0)	7,8 kN
Category	Single Row Ball Bearings
Inventory	0.0
Manufacturer Name	SKF
Minimum Buy Quantity	N/A
Weight / Kilogram	0.131
EAN	7316577085856
Product Group	B00308
Enclosure	Open
Precision Class	ABEC 1 ISO P0
Maximum Capacity / Filling Slot	No



KRS Guide Wheel Bearing Co., Ltd

Rolling Element	Ball Bearing
Snap Ring	No
Internal Special Features	Polyalkylene Glycol/Graphite Mixture Filled
Cage Material	Steel
Internal Clearance	C0-Medium
Inch - Metric	Metric
Long Description	25MM Bore; 52MM Outside Diameter; 15MM Outer Race Width; Open; Ball Bearing; ABEC 1 ISO P0; No Filling Slot; No Snap Ring; Polyalkylene Glycol/Graphite Mixture Filled Internal Special Features; C0-M
Other Features	Deep Groove Extreme Temperature Variant
Category	Single Row Ball Bearing
UNSPSC	31171504
Harmonized Tariff Code	8482.10.50.68
Noun	Bearing
Keyword String	Ball
Manufacturer URL	http://www.skf.com
Manufacturer Item Number	6205/VA201
Weight / LBS	0.28
Bore	0.984 Inch 25 Millimeter
Outer Race Width	0.591 Inch 15 Millimeter
Outside Diameter	2.047 Inch 52 Millimeter
Inner Race Width	0 Inch 0 Millimeter
bore diameter:	25 mm
static load capacity:	7.8 kN
outside diameter:	52 mm
precision rating:	Not Rated
overall width:	15 mm



KRS Guide Wheel Bearing Co., Ltd

finish/coating:	Uncoated
bore type:	Round
cage material:	Steel
closure type:	Open
outer ring width:	15 mm
row type & fill slot:	Single Row Non-Fill Slot
fillet radius:	1 mm
snap ring included:	Without Snap Ring
maximum rpm:	230 RPM
internal clearance:	C0
series:	62
operating temperature range:	-20 to +480 ° F
resistance features:	Corrosion Resistant, Extreme Temperature
d_1	34.35 mm
D_2	46.21 mm
$r_{1,2}$ min.	1 mm
d_a min.	30.6 mm
D_a max.	46.4 mm
r_a max.	1 mm
Basic dynamic load rating C	14.8 kN
Basic static load rating C_0	7.8 kN
Limiting speed	230 r/min
Limiting temperature T max.	250 ° C
Mass bearing	0.13 kg